



Press Release

New Taub Center publication: "State of the Nation in Pictures 2013"

The Taub Center for Social Policy Studies in Israel has published a unique booklet of figures that is both original and easy to read – one figure per page accompanied by a short explanation. The booklet presents the state of Israel's society and economy in a number of pivotal areas: the macro picture, employment, education, costs of living, health, social services, and transportation. The booklet, edited by the Center's Executive Director Prof. Dan Ben-David, is primarily based on Taub Center research and details where Israel excels and where the country is in need of a course correction.

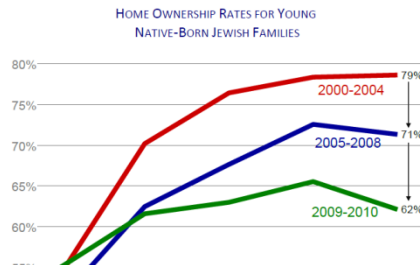
The pamphlet is available from the Taub Center by phone or via email. The booklet is also available electronically online ([HERE](#)).

The Taub Center for Social Policy Studies in Israel, headed by Professor Dan Ben-David, is an independent, non-partisan institution for socioeconomic research based in Jerusalem. The Center provides decision makers, as well as the public in general, with a big picture perspective on economic and social areas. The Center's interdisciplinary Policy Programs – comprising leading academic and policy making experts – as well as the Center's professional staff conduct research and provide policy recommendations in the key socioeconomic issues confronting the State.

For details or to arrange an interview contact Gal Ben Dor, Director of Marketing and Communication 050-5931577.

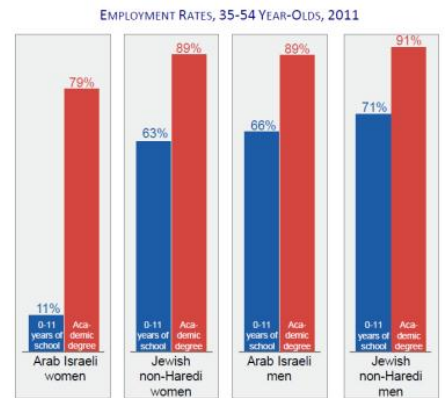
Home ownership drops among young middle- and higher-income working families

Among young families, the poorest have the lowest rates of home ownership – and this has barely changed over the past decade. During this period, however, home ownership has been declining more rapidly among successively higher-income young families. Changing social behavior among the young – delaying school, marriage, and "settling down" – is one reason for these changes. Another possible explanation is high and rising housing costs over the past decade.



Education's effect on employment cuts across gender and religion

Among all population groups in Israel – Jews and Arabs, men and women – those with an academic education have substantially higher employment rates than those who did not complete high school. The difference is particularly pronounced among Arab Israeli women.



Source: Dan Ben-David, *State of the Nation Reports 2010-2012*, Taub Center
Data: Central Bureau of Statistics

2013
State of the Nation
in Pictures

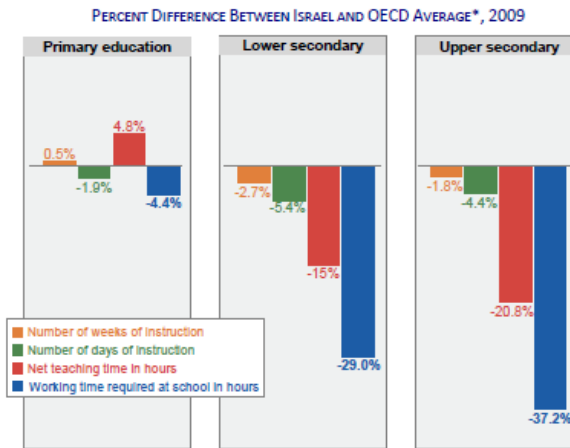
Society, Economy and Policy in Israel

Dan Ben-David, Editor

- The Macro Picture
- Employment and Education
- Education
- The Middle Class and the Cost of Living in Israel
- Transportation Infrastructure
- Health
- Social Services: Expenditures and Privatization

Israeli teachers work fewer hours in school year

There appear to be some major discrepancies in the amount of teachers' working time over the school year. In all three levels of education – primary, lower secondary, and upper secondary – the number of weeks of instruction in Israel is roughly the same as in the OECD. On the other hand, the number of days of instruction in Israel is lower than in the OECD, net teaching time in hours over the school year is higher in primary schools, but substantially less in secondary schools. The number of hours that teachers are required to work in all Israeli schools is considerably below the OECD average.



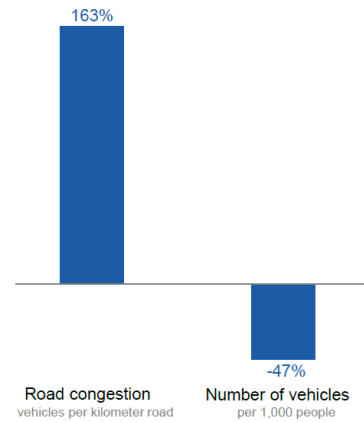
* In pu
Source:
Data: O

Education

Much greater road congestion, but only half the vehicles per person

The congestion on Israel's roads is over two and a half times the OECD average although the number of vehicles per person is about half the OECD average. As Israel manages to close the gap in standards of living between itself and the wealthier OECD countries, it stands to increase substantially the number of vehicles per capita. This will have very clear implications regarding the already heavy congestion on the country's roads.

DIFFERENCES BETWEEN ISRAEL AND THE OECD*, 2008



* Average of 22 OECD countries

Source: Dan Ben-David, *State of the Nation Report 2011-2012*, Taub Center
Data: World Bank

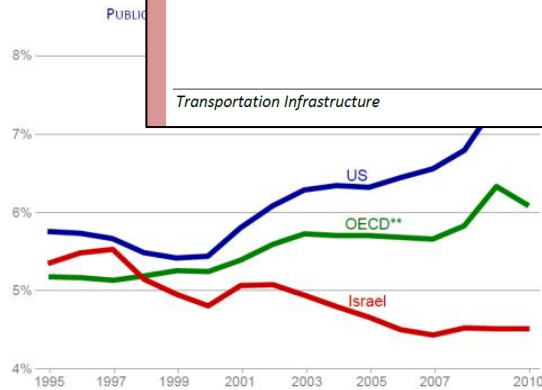
Transportation Infrastructure

48

State of the Nation in Pictures

Public healthcare expenditures are below OECD average –and dropping

While Israel's share of national healthcare expenditures out of GDP has only recently fallen below the OECD average, its public healthcare expenditures relative to GDP have been below the OECD – and falling – since the late nineties. This downward trend stands in sharp contrast to steadily rising public healthcare spending in the developed world.



* Expenditure per standardized person (using "old" capitulation formula) as a percent of GDP per capita

**Average of the 22 most developed OECD countries (excluding the US)

Source: Dov Chernichovsky and Eitan Regev, *State of the Nation Report 2011-2012*, Taub Center
Data: OECD, Central Bureau of Statistics

State of the Nation in Pictures

61

Health